

ADA Build it Right

Let us be your tour guide to better accessibility.

ADA Build it Right provides surveys and education on accessibility in the building codes and the Americans with Disabilities Act (ADA).

ADA Build it Right facilitates real progress to make the world accessible for people with disabilities. Our emphasis is on business accessibility. We also work to promote awareness of the needs of the disabled to create permanent change in building practices. We find that young people are highly receptive to this message.



Site accessibility and transition plan surveys.

Plan review and building code consulting.

Speaker for organizations, schools and staff meetings.

Our inspectors include people with disabilities who demonstrate the use of accessible features. We encourage participation by your staff to maximize the educational exposure. Our full-service Accessibility Surveys identify non-complying issues and offer recommended solutions. We meet with your contractors to explain the codes and follow up to audit the work for compliance. Our final report will include photographs and comments on the final work.



ADA Build it Right was founded in 1999 by Wayne and Robert Yarnall. Wayne has been a disability advocate for over 19 years and member of the International Code Council. Robert Yarnall is the Building Official and Code Enforcement Officer for the City of Goose Creek, SC.

Disabled access specifications

The Americans with Disability Act is only part of the accessibility picture. There are several factors to be considered, including type of facility, specifications and scoping (how specifications are used).

A. Type of Facility

Title II - State and Local Governments

Title III - Places of Public Accommodations

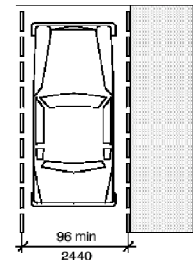
“Definition: Public accommodations are private entities who own, lease, lease to, or operate facilities such as restaurants, retail stores, hotels, movie theaters, private schools, convention centers, doctors’ offices, homeless shelters, transportation depots, zoos, funeral homes, day care centers, and recreation facilities, including sports stadiums and fitness clubs.”

Some facilities are not included in the ADA. The federal government is covered by earlier laws and churches are not covered. However they are covered by state and local building codes.

B. Specifications and Codes

There are multiple codes and specifications which are generally the same:

1. ADAAG 1998 and upcoming ADA/ABA Accessibility Guidelines 2004.
2. ICC/ANSI A117.1-2003
3. International Building Code 2006



ADA Build it Right is a 501(c)3 non-profit organization and contributions are welcomed to support our activities. Please see our web site to make contributions or call.

ADA Build it Right, Inc.

Wayne Yarnall

Portland, OR (971) 404-2982

Vancouver, WA (360) 433-0842

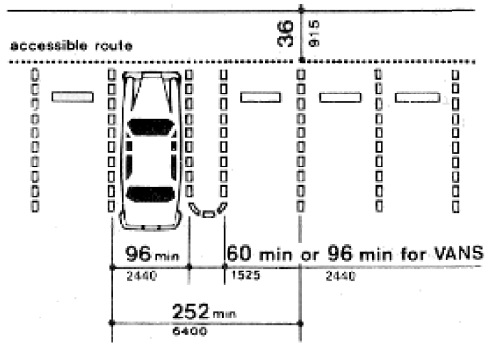
<http://adabuild.com>

help@adabuild.com

<http://vanaccessibleparking.org>

Elements of Accessible Features - code reference ICC/ANSI A117.1-2003

A. Parking -- Parking spot 8 ft. (Oregon 9 ft.) wide with access aisle on passengers side. Access aisle 8 ft. wide for side-lift van accessible, 5 ft. (Oregon 6 ft.) wide not van accessible. **If there is only one parking spot it must be van accessible.** Slope of spot and aisle must be 2% or less (1" in 50" slope) - flatter the better.



B. Accessible Route -- to entrance -- 36" minimum width, curb-ramps maximum slope 1" in 12". Ramps maximum slope 1" in 12" run with railings, walking surfaces maximum slope 1" in 20".

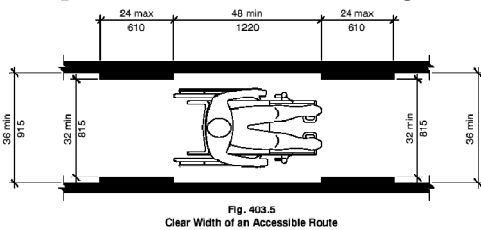
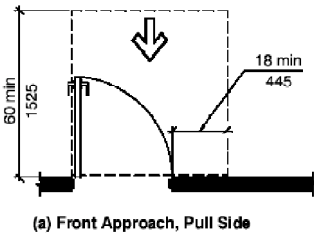


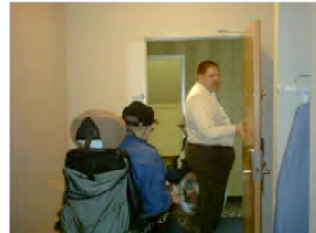
Fig. 403.5
Clear Width of an Accessible Route



C. Getting in the door -- flat landing space in front of door (60" perpendicular to door), 18 to 24 inches space to the latch side, at least 32" of clear passage width, low threshold, and low effort to pull open.

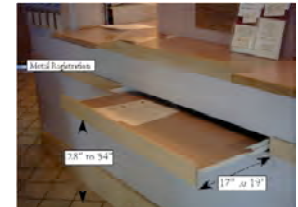


(a) Front Approach, Pull Side

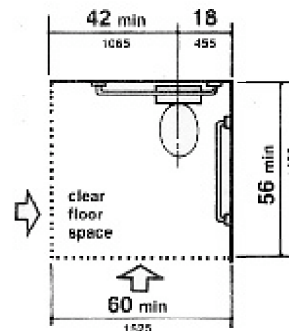


D. Accessing Services -- Look for access to the services, 36"-32" clearance for wheel chair, easy checkout stands or similar stations, uncluttered floor space.

The tops of dining surfaces and work surfaces shall be 28 inches (710 mm) minimum and 34 inches (865 mm) maximum above the finish floor or ground.



E. Using the bathroom -- door easy to use with 36" clear passage, toilet 17 to 19 inches tall, 30" or more clear space beside wide-side of the toilet. Grab bars by the toilet. The stall should be at least 60" wide with the toilet to one side (18") and a depth of 56" to 92".



ADA Build it Right